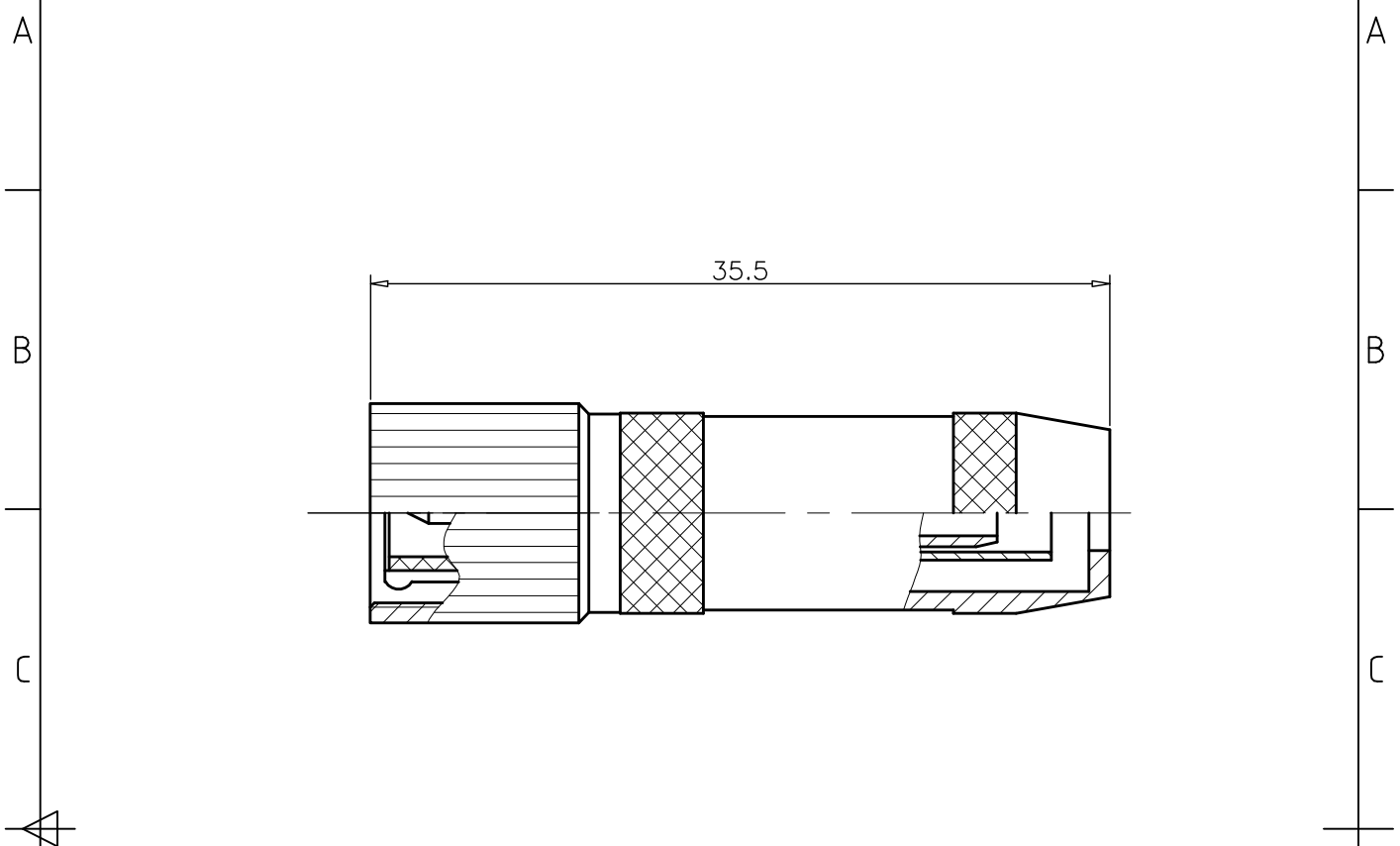


1	2	3	4	
RevNo	Revision note	Date	Signature	Checked
00	Sketch Only	5/9/14	Teresa	Simon



Interface Per: MIL-STD-348, IEC 60169-13
 Material & Finishing:
 1. Center conductor: Brass, Gold Plating
 2. Insulators: PTFE
 3. Ferrule: Copper, Nickel Plating
 4. Spring Loaded Contacts: Bronze, Gold Plating
 5. Body & Other Metal: Brass, Nickel Plating

RoHS Compliant.

ALL DIMENSIONS ARE IN MILLIMETERS AND [INCHES]		Title	
KERUI ELECTRONIC CO;LTD		1.6-5.6 75ohm male crimp for SYV-75-2-1 cable	
THESE DRAWING & SPEC. ARE THE PROPERTY OF KERUI ELECTRONIC CO;LTD AND SHALL NOT BE REPRODUCED, OR COPIED OR USED AS THE BASIS FOR THE MANUFACTURE OR SALE OF APPARATUS OR DEVICES WITHOUT THEIR EXPRESS WRITTEN CONSENT.	UNLESS OTHERWISE NOTED ALL SURFACES FINISHED TO 64/MAX.	Drawn by Teresa	Ckd by Simon
	ALL TOLERANCES ARE: DECIMALS FRACTIONS ANGLES x ± 1.0 ±1/64 x' ± 1' x.x ± 0.5 x'x' ± 0.5° x.xx ± 0.1	Appd by Richard	Date 5/9/2014
		Scale 3:1	Sheet 1 of 1
		40 0111 106 01	